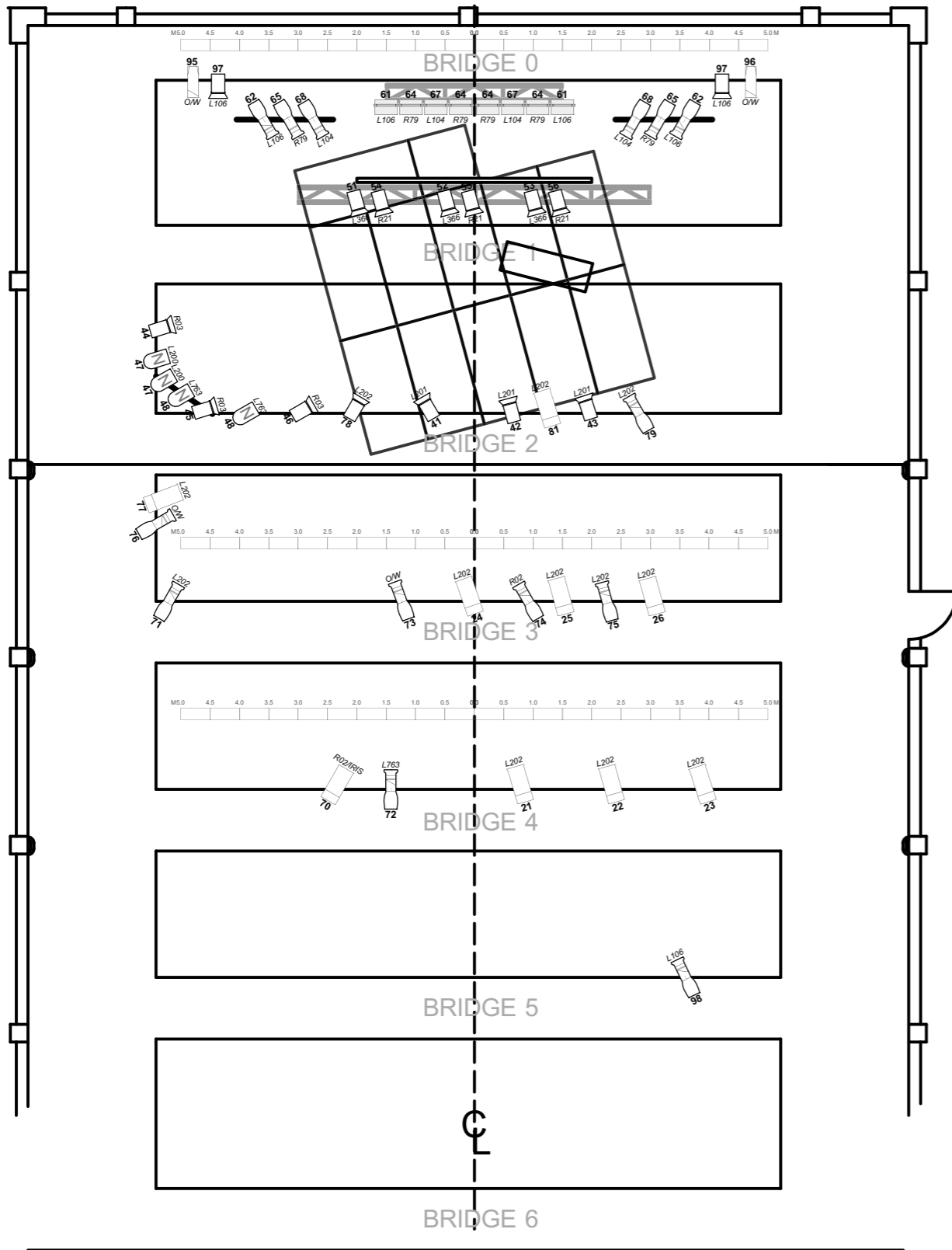
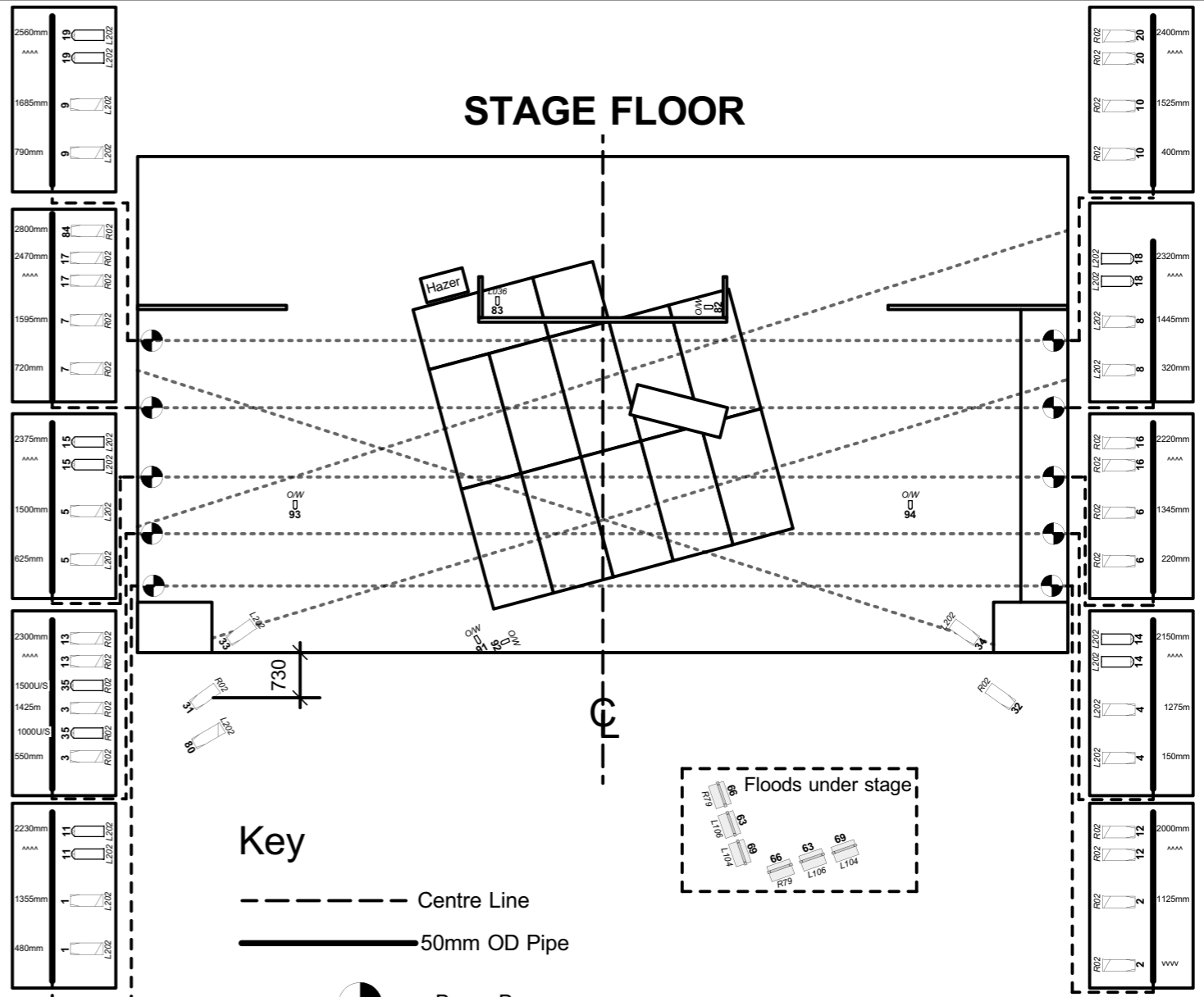


GORDON THEATRE - WOLLONGONG LIGHTING GRID



STAGE FLOOR



Key

- Centre Line
- 50mm OD Pipe
- Boom Base

Instruments	Used
	14
	4
	10
	6
	4
	34
	12
	9
	15
	4

Notes:

- All fresnels to have barndoors, all profiles to have four shutters.
- R119 frost should be available for all profiles
- Heights next to boom lamps indicate lens height.
- 'AAAA' or 'vvv' indicates that a lamp should be as close as possible to the lamp above or below whilst remaining focusable.
- Truss trim height will be set at pre-rig
- Hazer on Ch 301
- Media Server on Ch 99
- Ch 31 - 34 + Ch 80 on H-stands